



metropolitan
family services

2022-2023 Head Start
Annual Report
DuPage

DUPAGE HEAD START

GENERAL INFORMATION

Grantee: Metropolitan Family Services - DuPage
Grant Number: 05CH010475
Address: 222 East Willow Avenue, Wheaton IL 60187
Phone: 630-784-4015
Fax: 630-682-5276

Head Start Director: Allison Delgado
delgadoa@metrofamily.org

Agency Website: www.metrofamily.org
Agency Type: Grantee

Agency Description: Metropolitan Family Services - DuPage is a Head Start/Early Head Start grantee that provides services through directly operated and delegate programs throughout DuPage County.

DIRECTLY OPERATED PROGRAM SITES

Metropolitan Family Services - DuPage operates 9 center-based sites throughout the county, providing Monday-Friday, full day sessions (6 hours 15 minutes/day).

ADDISON
39 Head Start Slots
Army Trail Elementary
346 West Army Trail Blvd.
Addison, IL 60101

ADDISON CHILDREN'S CENTER
16 Early Head Start Slots
121 East Fullerton
Addison, IL 60101

BENSENVILLE
**40 Head Start Slots/
16 Early Head Start Slots**
Tioga Elementary School
212 Memorial Avenue
Bensenville, IL 60106

CAROL STREAM
20 Head Start Slots
Outreach Community Center
345 South President Avenue
Carol Stream, IL 60188

**St. Andrew's United
Methodist Church**
40 Head Start Slots
250 North Gary Avenue
Carol Stream, IL 60188

WHEATON
19 Head Start Slots
Longfellow Elementary School
311 West Seminary Avenue
Wheaton, IL 60187

14 Head Start Slots
Lowell Elementary School
312 S President Street
Wheaton, IL 60187

13 Head Start Slots
Hawthorne Elementary School
334 Wakeman Avenue
Wheaton, IL 60187

WARRENVILLE
34 Head Start Slots
Johnson Elementary School
2S700 Continental Drive
Warrenville, IL 60555

GLEN ELLYN
17 Head Start Slots
Westfield Elementary School
2S125 Mayfield Lane
Glen Ellyn, IL 60137

DUPAGE HEAD START

DIRECTLY OPERATED HOME-BASED

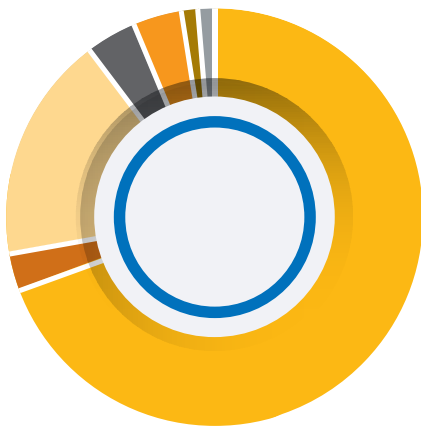
Metropolitan Family Services - DuPage operates home-based educational programs, providing services for 139 Early Head Start children and families throughout the county. The majority of Early Head Start home visiting caseloads are based in the Addison, Glendale Heights, Morton Grove, Niles Township, Skokie, Villa Park, Westmont, Woodridge, Warrenville and Wheaton communities.



OVERALL GRANTEE BUDGET

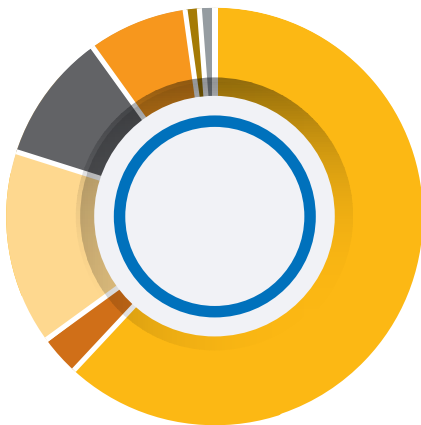
TOTAL PUBLIC AND PRIVATE FUNDS RECEIVED: \$8,781,505

Public Funds		Private Funds	
Source	Amount	Source	Amount
Federal	\$6,097,913	In-Kind	\$1,570,541
State	\$250,638	Foundations/Individuals/ Corporations	\$862,413
		Fee	\$0
Total	\$6,348,551	Total	\$2,432,954



2021 BUDGETED EXPENDITURES

- 68% Salaries/Benefits
- 2% Subcontractors/Professional Fees
- 17% Administrative
- 6% Program Expenses/Food
- 5% Occupancy/Technology
- 1% Other
- 1% Staff/Client Transportation



2021 ACTUAL EXPENDITURES

- 65% Salaries/Benefits
- 2% Subcontractors/Professional Fees
- 19% Administrative
- 7% Program Expenses/Food
- 5% Occupancy/Technology
- 1% Other
- 1% Staff/Client Transportation

ENROLLMENT

FUNDED ENROLLMENT - EARLY HEAD START*

	# ENROLLED	% TOTAL ENROLLMENT
Total Funded Early Head Start Enrollment	171	N/A
Early Head Start Funded (Actual) Enrollment	171	N/A
Total Cumulative Enrollment - Children	221	100%
Number of Children Enrolled < 45 days	10	4%

FUNDED ENROLLMENT BY PROGRAM OPTION*

		% FUNDED ENROLLMENT
Home-Based Program	134	78.36%
Center-Based Full-Day Full - Year 5 Days per Week	32	18.71%

ENROLLMENT - CHILDREN BY AGE*

Under 1 Year	76	35%
1 Year Old	70	31%
2 Years Old	75	34%

ENROLLMENT - PREGNANT WOMEN

Total Enrollment of Pregnant Women	21	100%
------------------------------------	----	------

ENROLLMENT BY ELIGIBILITY

Income Below 100% Poverty Line	98	40.5%
Receipt of Public Assistance (TANF, SSI, etc.)	88	36.4%
Foster Child	0	0%
Status as Homeless	42	17.4%
Over-Income	15	6%

1) Percentages based on cumulative number of children enrolled throughout the year.

2) Percentages for Early Head Start include enrolled pregnant women, unless indicated by an *.

3) Due to individual percentage rounding, a category's combined percentages may be slightly greater or less than 100%.

FUNDED ENROLLMENT - HEAD START**# ENROLLED****% TOTAL ENROLLMENT**

Total Funded Head Start Enrollment	241	N/A
Head Start Funded (Actual) Enrollment	256	N/A
Total Cumulative Enrollment	256	100%
Number of Children Enrolled < 45 days	4	1.5%

ENROLLMENT - CHILDREN BY AGE (at enrollment)

2 Years Old	8	3%
3 Years Old	101	40%
4 Years Old	147	57%
5 Years Old	0	0%

FUNDED ENROLLMENT - HEAD START**# ENROLLED****% TOTAL ENROLLMENT****ENROLLMENT BY ELIGIBILITY**

Income Below 100% Poverty Line	141	55%
Receipt of Public Assistance (TANF, SSI, etc.)	74	29%
Status as Foster Child	2	1%
Status as Homeless	8	3%
Income 101-130% Poverty Level	16	6.2%
Over-Income	15	5.8%

HEALTH

HEALTH SERVICES INFORMATION - EARLY HEAD START # ENROLLED % TOTAL ENROLLMENT

Children With Health Insurance	157	86%
Number Enrolled in Medicaid and/or CHIP	147	80%
Number With Private Insurance	9	5%

MEDICAL HOME (at end of enrollment)

Number of Children With an Ongoing Source of Continuous, Accessible Healthcare	157	86%
--	-----	-----

MEDICAL SERVICES (at end of enrollment)

Number of all Children Up-to-Date on:

EPSDT Schedule	108	26%
Of These, the Number Diagnosed With a Chronic Condition Needing Medical Treatment	1	1%
Of These, the Number Who Have Received or are Receiving Medical Treatment	1	1%

Number of all Children who Received Medical Treatment of the Following Chronic Health Conditions, Including Those Diagnosed Prior to June 30, 2017:

Anemia	0	0%
Asthma	1	.5%
Hearing Difficulties	1	.5%
Vision Problems	2	1%
High Lead Levels	4	2%

IMMUNIZATION SERVICES (at end of enrollment)

Number of Children Determined Up-to-Date or on Catch up Schedule	207	93%
Number of Children Exempt	6	2.7%

DENTAL HOME (at end of enrollment)

Number of Children with Continuous, Accessible Dental Care Provided by a Dentist	168	76%
Number of infant/toddlers determined up-to-date on EPSDT Schedule for oral care	80	36%

HEALTH SERVICES INFORMATION - PREGNANT WOMEN # ENROLLED % TOTAL ENROLLMENT

HEALTH INSURANCE (at end of enrollment)

Number of Pregnant Women With at Least One Type of Health Insurance	21	100%
Pregnant Women - Services		
Prenatal Care	11	100%
Postpartum Care	16	76%
Mental Health Interventions and Follow-up	18	86%
Substance Abuse Prevention	18	86%
Prenatal Education on Fetal Development	18	86%
Breastfeeding Education	18	86%

HEALTH SERVICES INFORMATION (CHILDREN) - HEAD START

ENROLLED % TOTAL ENROLLMENT

HEALTH INSURANCE (at end of enrollment)

Children With Health Insurance	256	100%
Number Enrolled in Medicaid and/or CHIP	248	97%
Number With Private Insurance	6	3%

MEDICAL HOME (at end of enrollment)

Number of Children With an Ongoing Source of Continuous, Accessible Healthcare	256	100%
--	-----	------

MEDICAL SERVICES (at end of enrollment)

Number of all Children Up-to-Date on:

EPSDT Schedule	239	93%
Of These, the Number Diagnosed With a Chronic Condition Needing Medical Treatment	14	6%
Of These, the Number Who Have Received or are Receiving Medical Treatment	14	6%

Number of all Children who Received Medical Treatment of the Following Chronic Health Conditions, Including Those Diagnosed Prior to June 30, 2017:

Anemia	0	0%
Asthma	8	3%
Hearing Difficulties	1	.5%
Vision Problems	4	1.5%
High Lead Levels	0	0%

HEALTH SERVICES INFORMATION - HEAD START**# ENROLLED****% TOTAL ENROLLMENT****IMMUNIZATION SERVICES (at end of enrollment)**

Number of Children Determined Up-to-Date	251	96%
Number of Children Exempt	5	4%

DENTAL HOME (at end of enrollment)

Number of Children with Continuous, Accessible Dental Care Provided by a Dentist	256	100%
Number of Children who Received Preventative Dental Care	233	91%
Number of Children in Need of Treatment	39	15%
Number of Children who Received Treatment	19	7%

FAMILY INFORMATION**NUMBER OF FAMILIES - EARLY HEAD START****# ENROLLED****% TOTAL ENROLLMENT**

Total Number of Families	194	100%
Number of Two-Parent Families	145	75%
Number of Single-Parent Families	49	45%

FAMILY SERVICES

The Number of Families who Received Services:

Emergency/Crisis Intervention	117	60%
Housing assistance (e.g., subsidies, utilities, repairs)	23	12%
Asset building services (e.g. financial education, debt counseling)	0	0%
Mental health services	26	13%
Substance misuse prevention	0	0%
Substance misuse treatment	0	0%
English as a second language (ESL) training	68	35%
Assistance in enrolling into an education or job training program	30	16%
Research-based parenting curriculum	99	51%
Involvement in discussing their child's assessment and progress	164	85%
Supporting transitions between programs	104	64%
Education on preventative medical and oral health	133	69%
Education on health/developmental consequences of tobacco use	20	10%
Education on nutrition	145	75%
Education on postpartum care (e.g. breastfeeding support)	26	13%
Education on relationship/marriage	5	3%
Assistance to families of incarcerated individuals	0	0%
Number of Families That Received at Least One Service	167	86%

NUMBER OF FAMILIES – HEAD START**# ENROLLED****% TOTAL ENROLLMENT**

Total Number of Families	238	100%
Number of Two-Parent Families	159	67%
Number of Single-Parent Families	79	33%

FAMILY SERVICES

The Number of Families who Received Services:

Emergency/Crisis Intervention	115	49%
Housing assistance (e.g., subsidies, utilities, repairs)	15	6%
Asset building services (e.g. financial education, debt counseling)	36	15%
Mental health services	37	16%
Substance misuse prevention	0	0%
Substance misuse treatment	0	0%
English as a second language (ESL) training	12	5%
Assistance in enrolling into an education or job training program	8	3%
Research-based parenting curriculum	70	29%
Involvement in discussing their child's assessment and progress	230	97%
Supporting transitions between programs	138	58%
Education on preventative medical and oral health	229	96%
Education on health/developmental consequences of tobacco use	4	2%
Education on nutrition	201	84%
Education on postpartum care (e.g. breastfeeding support)	1	>1%
Education on relationship/marriage	1	>1%
Assistance to families of incarcerated individuals	1	>1%
Number of Families That Received at Least One Service	236	99%

SCHOOL READINESS

Special Efforts to Prepare Children for Kindergarten

SCHOOL READINESS GOALS

Social Emotional:

- Children will demonstrate positive social, interpersonal, and self-help skills.

Physical Development:

- Children will develop control and manipulation of large and small muscles.

Language:

- Children will increase their ability to communicate.

Approaches to Learning:

- Children will develop skills to foster learning.

Literacy:

- Children will develop pre-reading and writing skills

Mathematics:

- Children will demonstrate mathematical concepts, ideas, and language.

English Language Acquisition:

- Dual Language Learners will demonstrate progress in English language development.

MONITORING REVIEW

MFS DuPage Early Learning programs were not monitored by the Office of Head Start or the Illinois State Board of Education in FY22.

PARENT INVOLVEMENT & FAMILY ENGAGEMENT

Metropolitan Family Services DuPage offered a variety of opportunities for parents to be supported and engaged in their children's learning and educational process. Several diaper and food distribution events were held throughout FY22.

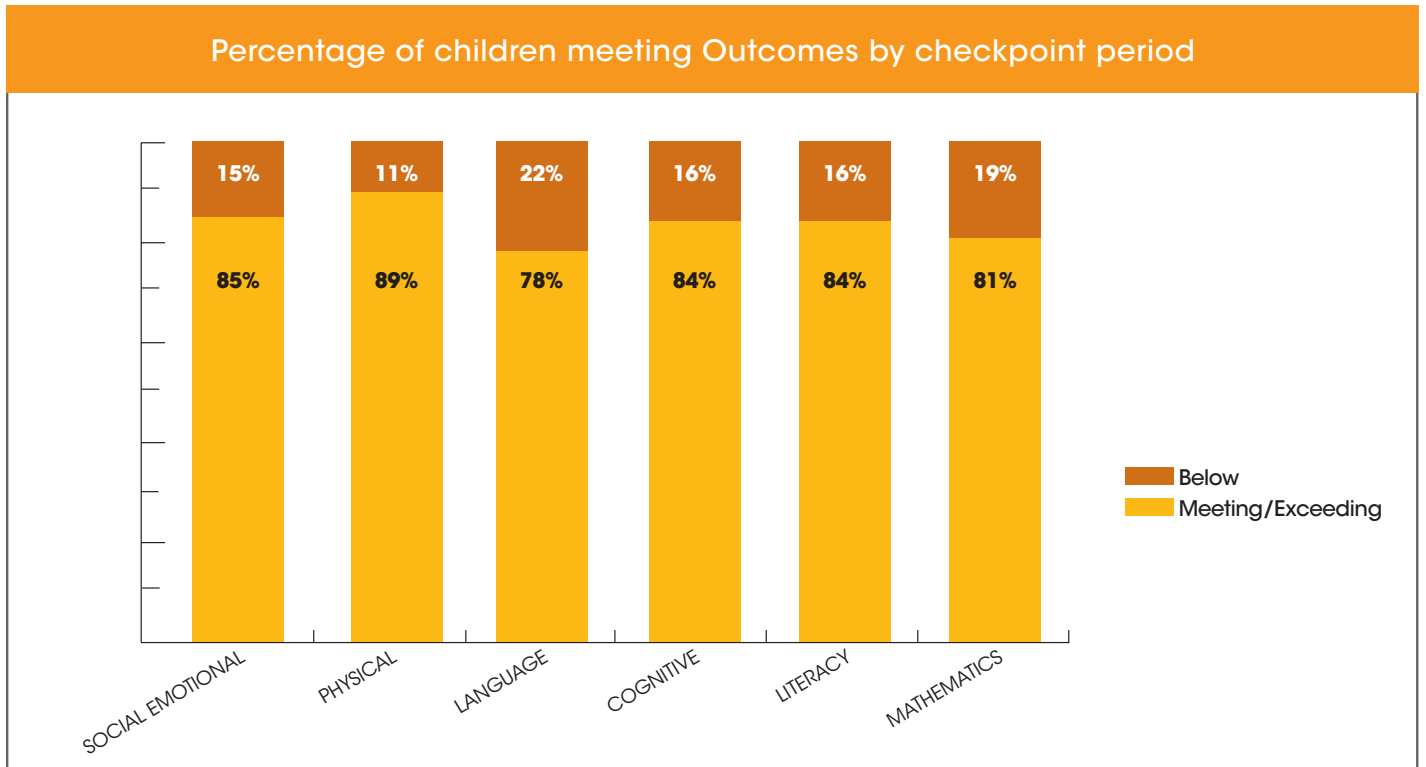
MFS DuPage's early learning programs utilized the Learning Genie © app to families in FY22. This app allowed parents to stay connected with teaching teams while the children were learning virtually and in person. This app provides daily updates on each child's day when children are in person and also provides activities, songs, and videos when the families are participating in at home learning (virtual) services.

We provide each family with access to individualized family support services, family trainings and workshops, play and learn socialization groups for our home based programming, and monthly Policy Council meetings. All of these parent involvement activities help connect families with their children's early education.

FINANCIAL AUDIT

Metropolitan Family Services' financial audit for fiscal year 2022 was conducted in accordance with generally accepted auditing standards as established by the American Institute of Certified Public Accountants and the standards issued by the Comptroller General of the United States. The Audit did not identify any deficiencies or material weaknesses in the agency's internal controls. The DuPage Parent Policy Council shared the audit report on February 22, 2024 and by the Metropolitan Board of Directors on January 25, 2024.

CHILD OUTCOMES DATA



When reviewing data for all programming across the program year, we are able to see growth from fall to winter and spring in all areas of development. The greatest growth throughout the program year was in the Literacy domain.

By the end of our program year, the students in our program had made exponential growth to meet or exceed widely held developmental milestones. After each checkpoint period, all staff participate in data dialogues, peer learning groups, and team meetings to help increased their understanding of school readiness scores and outcomes.

These data dialogues have led to increased professional development opportunities, for example, in the areas of working with dual language learners, children who have experienced trauma, and children who have received no other educational experiences prior due to the previous pandemic. Teachers and home visitors will focus on relationships, routines, and transitions during the upcoming program year to build a foundation of learning and developmental growth.

HOLISTIC STRATEGY TO EMPOWER FAMILIES



EDUCATION

We prepare young people and parents for success, from the early years throughout school, and all the way to college.



EMOTIONAL WELLNESS

We encourage healthy and productive lives through counseling and mental health services, parenting and family support and older adult services.



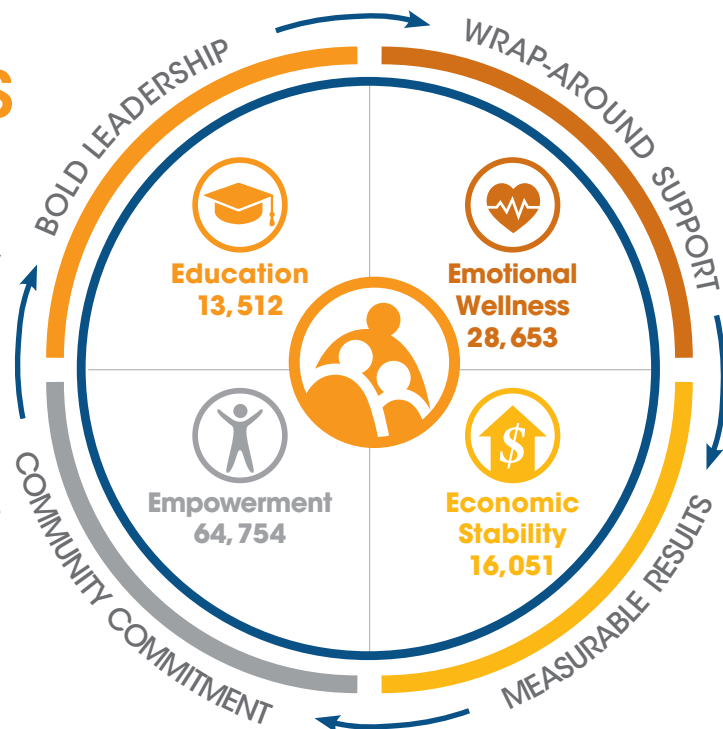
ECONOMIC STABILITY

We equip strong, self-sustaining families with the tools to find and maintain employment, achieve financial literacy, and build family wealth.



EMPOWERMENT

We help families stand up and be heard by providing legal aid, violence prevention, and domestic violence services.



Our Mission

To provide and mobilize the services needed to strengthen families and communities.

Our Vision

To be widely acknowledged as a major catalyst and resource for promoting family and community strengths.

FAMILY Values



FOCUS ON STRENGTHS

As servant leaders, we value individuals, families and communities, their inherent strengths, their ability to learn and grow, be resilient and find solutions to challenges. Our servant mindset inspires us to help people reach their full potential and own their empowerment.



ACCOUNTABILITY

We are honest and transparent, effectively managing resources entrusted to us, and in turn, investing in the people and communities we serve.



MOBILIZE FOR SOCIAL JUSTICE

We work to increase diversity, racial, gender and economic equity, inclusion and cultural competency in all that we do.



INNOVATIVE CULTURE

We are agile, responsive to complex and emerging social challenges. We are equally agile in our operations and management functions, while maintaining the integrity of our operational and management systems.



LEARNING ORGANIZATION

We value experience gained from mistakes, knowing this is key to continuous improvement and greater wisdom.



YES-MINDED APPROACH

We look for what is possible and find creative solutions, transforming challenges into viable opportunities.

Connect with us on LinkedIn
[LinkedIn.com/company/MetropolitanFamilyServices](https://www.linkedin.com/company/MetropolitanFamilyServices)

Like us on Facebook
[Facebook.com/MetroFamChicago](https://www.facebook.com/MetroFamChicago)

312-986-4000
www.metrofamily.org



metropolitan[™]
family services

families **m**powered