



metropolitan  
family services

2016-17 Head Start  
Annual Report  
DuPage

# DUPAGE HEAD START

## GENERAL INFORMATION

---

**Grantee:** Metropolitan Family Services - DuPage  
**Grant Number:** 05CH8297  
**Address:** 222 East Willow Avenue, Wheaton IL 60187  
**Phone:** 630-784-4015  
**Fax:** 630-682-5276

**Head Start Director:** Nicole Cameron  
cameronn@metrofamily.org

**Agency Website:** [www.metrofamily.org](http://www.metrofamily.org)

**Agency Type:** Grantee

**Agency Description:** Metropolitan Family Services - DuPage is a Head Start/Early Head Start grantee that provides services through directly operated and delegate programs throughout DuPage County.

## DIRECTLY OPERATED PROGRAM SITES

---

Metropolitan Family Services DuPage operates 9 center-based sites throughout the county, providing Monday-Thursday, part-time, morning and/or afternoon half-day sessions.

**ADDISON**  
**68 Head Start Slots**  
**Army Trail Elementary**  
346 West Army Trail Blvd.

**ADDISON CHILDREN'S CENTER**  
**16 Early Head Start Slots**  
121 East Fullerton  
Addison, IL 60101

**BENSENVILLE**  
**34 Head Start Slots,**  
**Tioga Elementary School**  
212 Memorial Avenue  
Bensenville, IL 60106

**BURR RIDGE/WILLOWBROOK**  
**17 Head Start Slots**  
**Anne M. Jeans Elementary School**  
16 West 632 91st Street  
Willowbrook, IL 60527

**CAROL STREAM**  
**102 Head Start Slots**  
**Outreach Community Center**  
345 South President Avenue  
Carol Stream, IL 60188

**St. Andrew's United Methodist Church**  
250 North Gary Avenue  
Carol Stream, IL 60188

**MEDINAH**  
**34 Head Start Slots**  
**Medinah Elementary School**  
22W300 Sunnyside  
Medinah, IL 60157

**WARRENVILLE**  
**34 Head Start Slots**  
**Johnson Elementary School**  
2S700 Continental Drive  
Warrenville, IL 60555

**WOOD DALE - 32 Head Start Slots**  
**Early Childhood Education Center**  
543 North Wood Dale Road  
Wood Dale, IL 60191



# DUPAGE HEAD START

## DIRECTLY OPERATED HOME-BASED

Metropolitan Family Services - DuPage operates home-based educational programs, providing services for 88 Early Head Start children and families throughout the county.

## DELEGATE AGENCY

**102 Head Start Slots**  
**40 Early Head Start Slots**

Educare of West DuPage  
851 Pearl Road  
West Chicago, IL 60185

The Educare Center program prepares young, at-risk children for school by implementing the approaches and practices that research deems as necessary to help young children grow up safe, healthy, and eager to learn. The program provides education and care for 142 children, ages 6 weeks to 5 years old, operating Monday through Friday, 7am to 6pm, year-round.

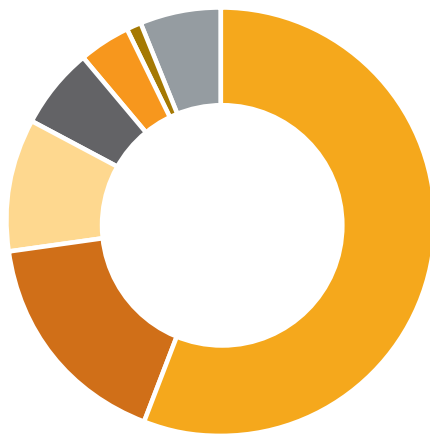


# OVERALL GRANTEE BUDGET

TOTAL PUBLIC AND PRIVATE FUNDS RECEIVED: \$7,472,664.

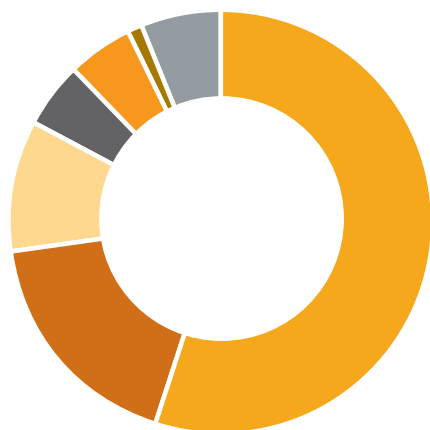
Public Funds		Private Funds	
Source	Amount	Source	Amount
Federal	\$5,615,200	In-Kind	\$1,385,255
State	\$117,071	Foundations/Individuals/ Corporations	\$295,138
<b>Total</b>	<b>\$5,792,271</b>	<b>Total</b>	<b>\$1,680,393</b>

## 2017 BUDGETED EXPENDITURES



- 56%** Salaries/Benefits
- 18%** Subcontractors/Professional Fees
- 10%** Administrative
- 5%** Program Expenses/Food
- 4%** Occupancy/Technology
- 1%** Other
- 6%** Staff/Client Transportation

## 2017 ACTUAL EXPENDITURES



- 54%** Salaries/Benefits
- 18%** Subcontractors/Professional Fees
- 11%** Administrative
- 5%** Program Expenses/Food
- 6%** Occupancy/Technology
- 1%** Other
- 5%** Staff/Client Transportation

# ENROLLMENT

## FUNDED ENROLLMENT – EARLY HEAD START\*

	# ENROLLED	% TOTAL ENROLLMENT
Total Funded Early Head Start Enrollment	144	N/A
Early Head Start Funded (Actual) Enrollment	140	N/A
Total Cumulative Enrollment – Children	171	100%
Number of Children Enrolled < 45 days	6	4%

## FUNDED ENROLLMENT BY PROGRAM OPTION\*

		% FUNDED ENROLLMENT
Home-Based Program	88	61%
Center-Based Full-Day Full - Year 5 Days per Week	56	39%

## ENROLLMENT – CHILDREN BY AGE\*

Under 1 Year	44	26%
1 Year Old	52	30%
2 Years Old	71	42%

## ENROLLMENT – PREGNANT WOMEN

Total Enrollment of Pregnant Women	4	100%
------------------------------------	---	------

## ENROLLMENT BY ELIGIBILITY

Income Below 100% Poverty Line	140	80%
Receipt of Public Assistance (TANF, SSI, etc.)	10	6%
Status as Homeless	5	3%
Over-Income	8	5%

## ENROLLMENT BY ETHNICITY

Hispanic or Latino Origin	115	67%
Non-Hispanic or Non-Latino Origin	56	33%

1) Percentages based on cumulative number of children enrolled throughout the year.

2) Percentages for Head Start and Early Head Start include enrolled pregnant women, unless indicated by an \*.

3) Due to individual percentage rounding, a category's combined percentages may be slightly greater or less than 100%.

**FUNDED ENROLLMENT – EARLY HEAD START****# ENROLLED****% TOTAL ENROLLMENT****ENROLLMENT BY RACE**

American Indian or Alaska Native	0	0%
Asian	23	13%
Black or African American	19	11%
White	116	66%
Biracial/Multi-racial	9	5%
Other	4	2%

**ENROLLMENT BY PRIMARY LANGUAGE**

English	47	27%
Spanish	97	55%
Middle Eastern & South Asian Languages	22	13%
European	1	1%
African Languages	3	2%
Unspecified	1	1%

**FUNDED ENROLLMENT – HEAD START****# ENROLLED****% TOTAL ENROLLMENT**

Total Funded Head Start Enrollment	423	N/A
Head Start Funded (Actual) Enrollment	423	N/A
Total Cumulative Enrollment	475	100%
Number of Children Enrolled < 45 days	5	1%

**FUNDED ENROLLMENT BY PROGRAM OPTION****% FUNDED ENROLLMENT**

Home-Based Program	36	9%
Center-Based		
Full Day Enrollment - 5 Days per Week	102	24%
Part-Day Enrollment	321	76%
Of these, the Number of Double Sessions	304	72%

**ENROLLMENT – CHILDREN BY AGE**

2 Years Old	26	5%
3 Years Old	187	39%
4 Years Old	262	55%
5 Years Old	0	0%

**FUNDED ENROLLMENT – HEAD START****# ENROLLED****% TOTAL ENROLLMENT**

---

**ENROLLMENT BY ELIGIBILITY**

Income Below 100% Poverty Line	314	66%
Receipt of Public Assistance (TANF, SSI, etc.)	17	4%
Status as Foster Child	8	2%
Status as Homeless	9	2%
Over-Income	42	9%

---

**ENROLLMENT BY ETHNICITY**

Hispanic or Latino Origin	292	61%
Non-Hispanic or Non-Latino Origin	180	38%

---

**ENROLLMENT BY RACE**

American Indian or Alaska Native	3	1%
Asian	36	8%
Black or African American	71	15%
White	327	69%
Biracial/Multi-racial	24	5%
Other	13	3%
	1	1%

---

**ENROLLMENT BY PRIMARY LANGUAGE**

English	167	35%
Spanish	237	50%
Middle Eastern & South Asian Languages	40	8%
East Asian Languages	2	0%
Pacific Island Languages	2	0%
European & Slavic Languages	21	4%
African Languages	6	1%
Other-Sign Language	0	0%

# HEALTH

## HEALTH SERVICES INFORMATION - EARLY HEAD START\* # ENROLLED % TOTAL ENROLLMENT

Children With Health Insurance	164	96%
Number Enrolled in Medicaid and/or CHIP	160	94%
Number With Private Insurance	4	2%

### MEDICAL HOME (at end of enrollment)\*

Number of Children With an Ongoing Source of Continuous, Accessible Healthcare	165	96%
--	-----	-----

### MEDICAL SERVICES (at end of enrollment)\*

Number of all Children Up-to-Date on:

EPSDT Schedule	117	68%
Of These, the Number Diagnosed With a Chronic Condition Needing Medical Treatment	2	1%
Of These, the Number Diagnosed With a Chronic Condition Needing Medical Treatment	2	1%

Number of all Children who Received Medical Treatment of the Following Chronic Health Conditions, Including Those Diagnosed Prior to June 30, 2017:

Anemia	1	1%
Asthma	1	1%
Hearing Difficulties	0	0%
Vision Problems	0	0%

### IMMUNIZATION SERVICES (at end of enrollment)\*

Number of Children Determined Up-to-Date	154	90%
Number of Children Exempt	2	1%

### DENTAL HOME (at end of enrollment)\*

Number of Children with Continuous, Accessible Dental Care Provided by a Dentist	138	81%
Number of infant/toddlers determined up-to-date on EPSDT Schedule for oral care	90	53%



HEALTH SERVICES INFORMATION – PREGNANT WOMEN	# ENROLLED	% TOTAL ENROLLMENT
--	------------	--------------------

#### HEALTH INSURANCE (at end of enrollment)

Number of Pregnant Women With at Least One Type of Health Insurance	4	100%
Pregnant Women – Services		
Prenatal Care	4	100%
Postpartum Care	3	75%
Substance Abuse Prevention	2	100%
Prenatal Education on Fetal Development	4	100%
Breastfeeding Education	4	100%
Number of Pregnant Women Who Received a Professional Dental Exam and/or Treatment	1	25%

#### HEALTH SERVICES INFORMATION (CHILDREN) - HEAD START

# ENROLLED	% TOTAL ENROLLMENT
------------	--------------------

#### HEALTH INSURANCE (at end of enrollment)

Children With Health Insurance	474	100%
Number Enrolled in Medicaid and/or CHIP	456	96%
Number With Private Insurance	18	4%

#### MEDICAL HOME (at end of enrollment)

Number of Children With an Ongoing Source of Continuous, Accessible Healthcare	475	100%
--	-----	------

#### MEDICAL SERVICES (at end of enrollment)

Number of all Children Up-to-Date on:

EPSDT Schedule	446	94%
Of These, the Number Diagnosed With a Chronic Condition Needing Medical Treatment	32	7%
Of These, the Number Who Have Received or are Receiving Medical Treatment	32	7%

Number of all Children who Received Medical Treatment of the Following Chronic Health Conditions, Including Those Diagnosed Prior to June 30, 2017:

Anemia	5	1%
Asthma	11	2%
Hearing Difficulties	1	0%
Vision Problems	21	4%
High Lead	2	0%
Diabetes	2	0%

**HEALTH SERVICES INFORMATION - HEAD START****# ENROLLED****% TOTAL ENROLLMENT****IMMUNIZATION SERVICES (at end of enrollment)**

Number of Children Determined Up-to-Date	472	99%
Number of Children Exempt	3	1%

**DENTAL HOME (at end of enrollment)**

Number of Children with Continuous, Accessible Dental Care Provided by a Dentist	475	100%
Number of Children who Received Preventative Dental Care	469	99%
Number of Children in Need of Treatment	73	15%
Number of Children who Received Treatment	47	10%

## FAMILY INFORMATION

**NUMBER OF FAMILIES - EARLY HEAD START****# ENROLLED****% TOTAL ENROLLMENT**

Total Number of Families	100	100%
Number of Two-Parent Families	52	52%
Number of Single-Parent Families	48	48%

**FAMILY SERVICES**

The Number of Families who Received Services:

Emergency/Crisis Intervention	64	64%
Housing Assistance	8	8%
Mental Health Services	9	9%
ESL Training	40	40%
GED	33	33%
Job Training	20	20%
Substance Abuse Prevention	0	0
Child Abuse and Neglect Services	1	1%
Domestic Violence Services	2	2%
Child Support Assistance	7	7%
Health Education	54	54%
Parenting Education	95	95%
Relationship Education	4	4%
Assistance to Families of Incarcerated Individuals	3	3%
Number of Families That Received at Least One Service	100	100%

**NUMBER OF FAMILIES – HEAD START****# ENROLLED****% TOTAL ENROLLMENT**

---

Total Number of Families	448	100%
Number of Two-Parent Families	219	49%
Number of Single-Parent Families	229	51%

---

**FAMILY SERVICES**

The Number of Families who Received Services:

Emergency/Crisis Intervention	208	46%
Housing Assistance	25	6%
Mental Health Services	26	6%
ESL Training	66	15%
GED	55	12%
Job Training	26	6%
Substance Abuse Prevention	5	1%
Substance Abuse Treatment	0	0
Child Abuse and Neglect Services	8	2%
Domestic Violence Services	3	1%
Child Support Assistance	9	2%
Health Education	257	57%
Parenting Education	146	33%
Relationship Education	4	1%
Assistance to Families of Incarcerated Individuals	3	1%
Number of Families That Received at Least One Service	448	100%

# SCHOOL READINESS

Special Efforts to Prepare Children for Kindergarten

## SCHOOL READINESS GOALS

### **Social Emotional:**

- Children will demonstrate positive social, interpersonal, and self-help skills.

### **Physical Development:**

- Children will develop control and manipulation of large and small muscles.

### **Language:**

- Children will increase their ability to communicate.

### **Approaches to Learning:**

- Children will develop skills to foster learning.

### **Literacy:**

- Children will develop pre-reading and writing skills.

### **Mathematics:**

- Children will demonstrate mathematical concepts, ideas, and language.

### **Science:**

- Children will demonstrate scientific skills.

### **Arts:**

- Children will enhance creative expression skills.

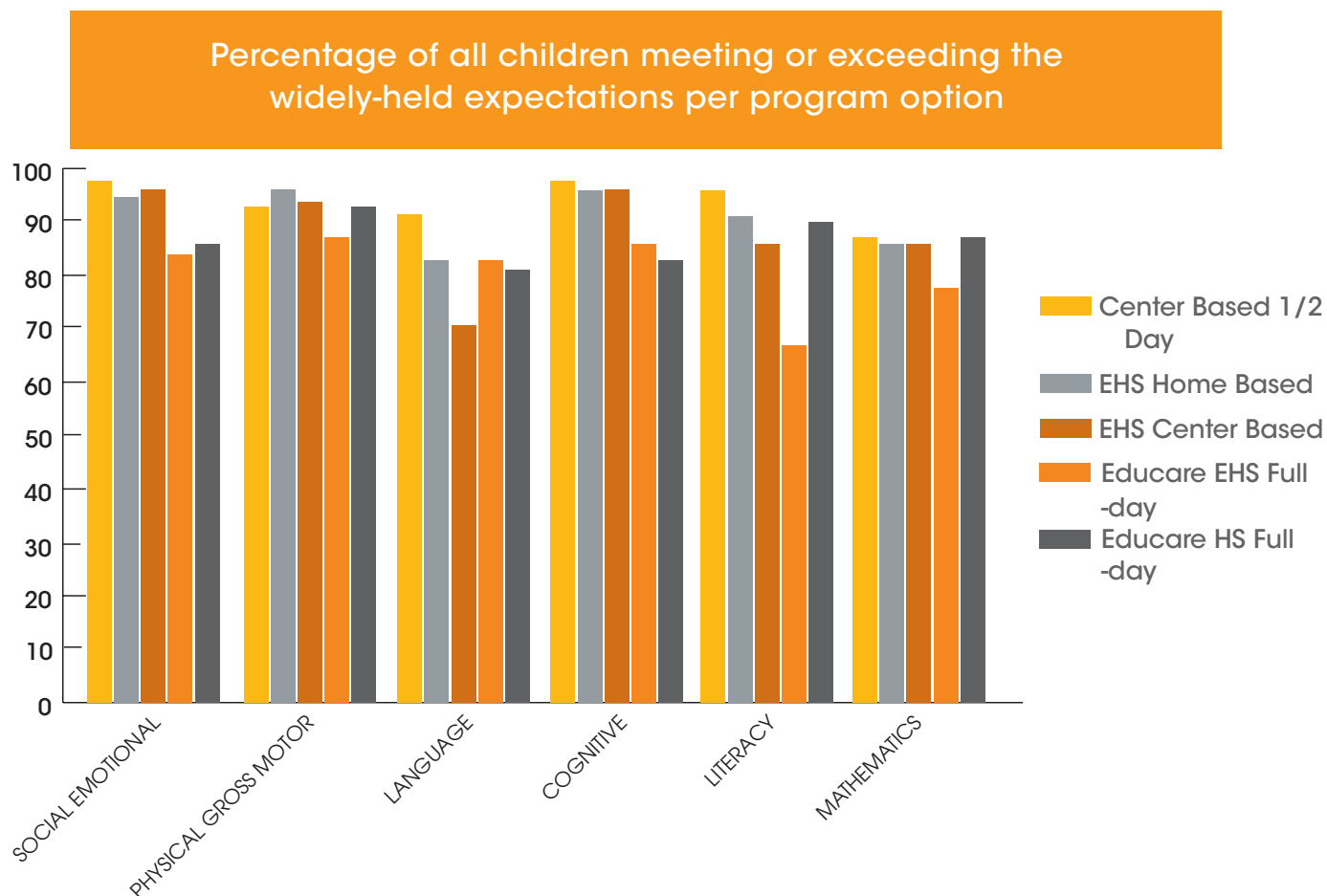
### **English Language Acquisition:**

- Dual Language Learners will demonstrate progress in English-language development



# CHILD OUTCOMES DATA COLLECTION

Percentage of all Grantee and Delegate children meeting or exceeding the widely-held expectations per final 2016 - 2017 assessment period (May 2017).



The above chart demonstrates that the majority of children enrolled throughout the 2016-2017 school year met or exceeded expectations in all areas of development and learning. This can be attributed to their experience of high quality education in our programs.

Our grant goal is that 85% of our children will meet or exceed the widely held expectations. When we combine the data of all children in our program, we can see that we have exceeded this expectation.

All staff participate in data dialogues, peer learning groups, and team meetings to help increase their understanding of school readiness scores and outcomes. These opportunities allow staff to dive deeper in the data and formulate hypotheses regarding the nature of their work and the effects, which it has on the children

## MONITORING REVIEW

---

Metropolitan Family Services did not participate in a monitoring review for the 2016-2017 Fiscal year.

## FINANCIAL AUDIT

---

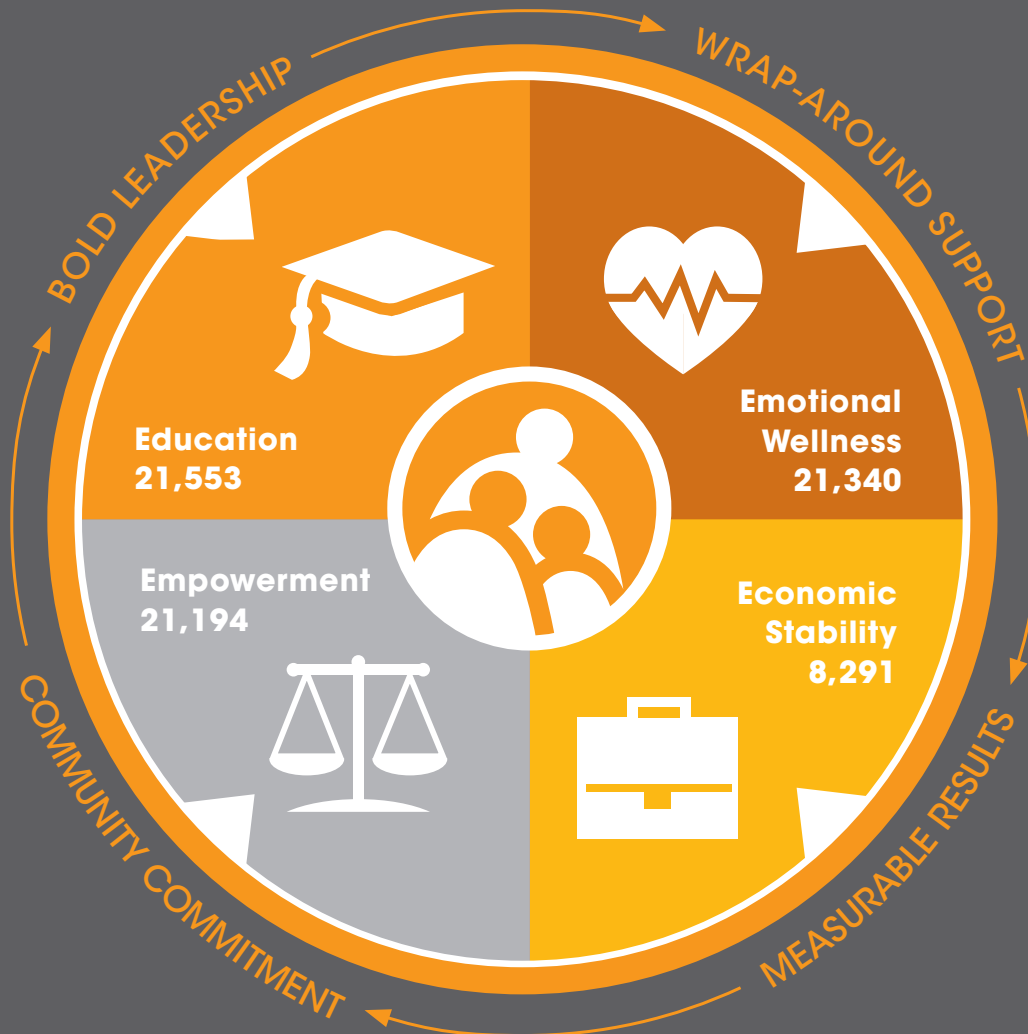
Metropolitan Family Services' financial audit for fiscal year 2016 was conducted in accordance with generally accepted auditing standards as established by the American Institute of Certified Public Accountants and the standards issued by the Comptroller General of the United States. The Audit did not identify any deficiencies or material weaknesses in the agency's internal controls. The audit report was reviewed and approved by the DuPage Parent Policy Council and by the Head Start Oversight Board in January of 2016.

## PARENT INVOLVEMENT & FAMILY ENGAGEMENT

---

Metropolitan Family Services DuPage Head Start and Early Head Start offers a variety of opportunities for parents to be engaged in their children's learning and educational process. We provide each family with access to individualized family support services, parent trainings and workshops, twice monthly socializations for our home-based program, a year-end parent activity and monthly Policy Council meetings. All of these parent involvement activities help connect Head Start and Early Head Start parents with their children's early education. Parents also are invited to participate in program volunteer opportunities, child/teacher events and at-home activities.

# HOLISTIC STRATEGY TO EMPOWER FAMILIES



## EDUCATION

We prepare young people and parents for success, from the early years throughout school, and all the way to college.

## EMOTIONAL WELLNESS

We encourage healthy and productive lives through counseling and mental health services, violence prevention and intervention, and older adult services.

## ECONOMIC STABILITY

We equip strong, self-sustaining families with the tools to find and maintain employment, achieve financial literacy, and build family wealth.

## EMPOWERMENT

We help families stand up and be heard by providing legal aid and court advocacy services to the Chicago area's most vulnerable people.

Follow Metropolitan on Twitter  
**@MetroFamChicago**

Connect with us on LinkedIn  
**LinkedIn.com/company/MetropolitanFamilyServices**

Like us on Facebook  
**Facebook.com/MetroFamChicago**

**312-986-4000**  
**www.metrofamily.org**



---

**metropolitan**<sup>™</sup>  
family services

---

*families **m**powered*